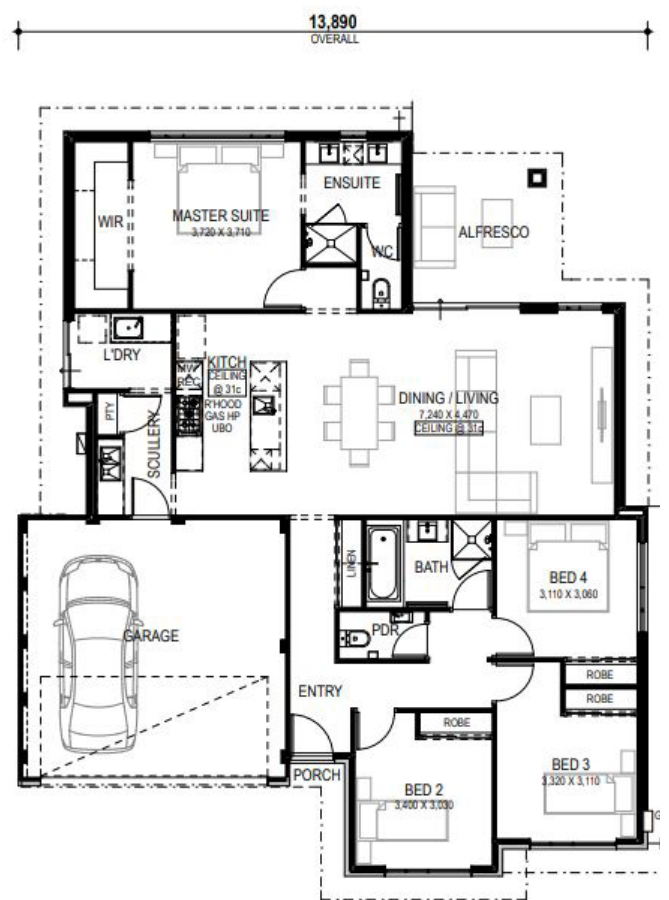




The Portici | 4 x 2 x 2

from **\$437,800\***

- Personalized design consultation with in-house interiors specialist.
- Smeg showroom cooking experience and product demonstration.
- National Homes' personal online client portal.
- Eco friendly and sustainable with minimum 6 star energy rating.
- Personal consultation with Essastone/Laminex designer and product specialist.
- Home future proofing with unique tech inclusions.
- Acrylic texture coat render (where applicable).



**Braydon McIntosh**  
**0431 512 986**

\* Photos for illustrative purposes only and may not comply with design guidelines. Prices subject to change without notice.