



Capricorn Beach

Yanchep

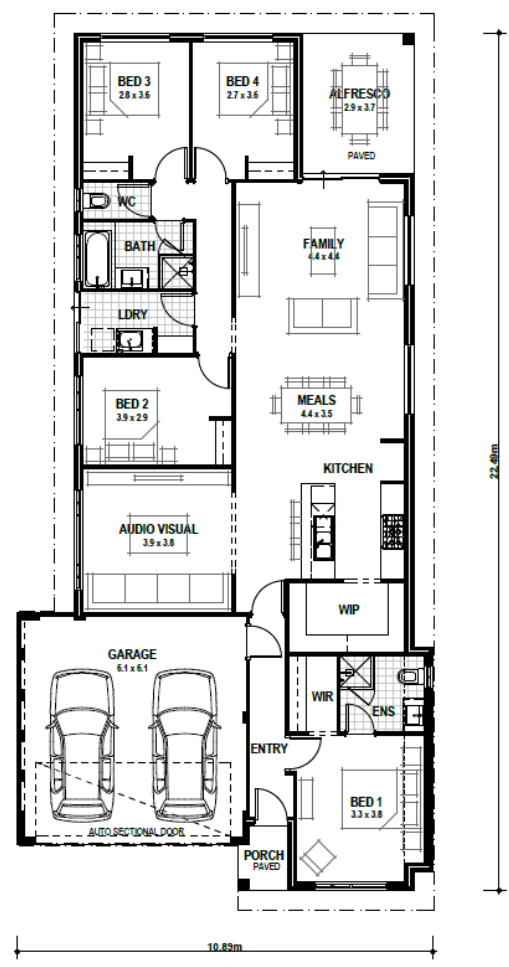
12.5 x 30m | 375sqm



The Chardonnay | 4 x 2 x 2

from **\$424,646***

- Theatre Room
- Open Plan Living and Dining
- 900mm Westinghouse Cooking Appliances
- Large Walk-In Pantry



Nick Popzeleff
0400 666 075

* Photos for illustrative purposes only and may not comply with design guidelines. Prices subject to change without notice.

