



# Capricorn Beach

Yanchep

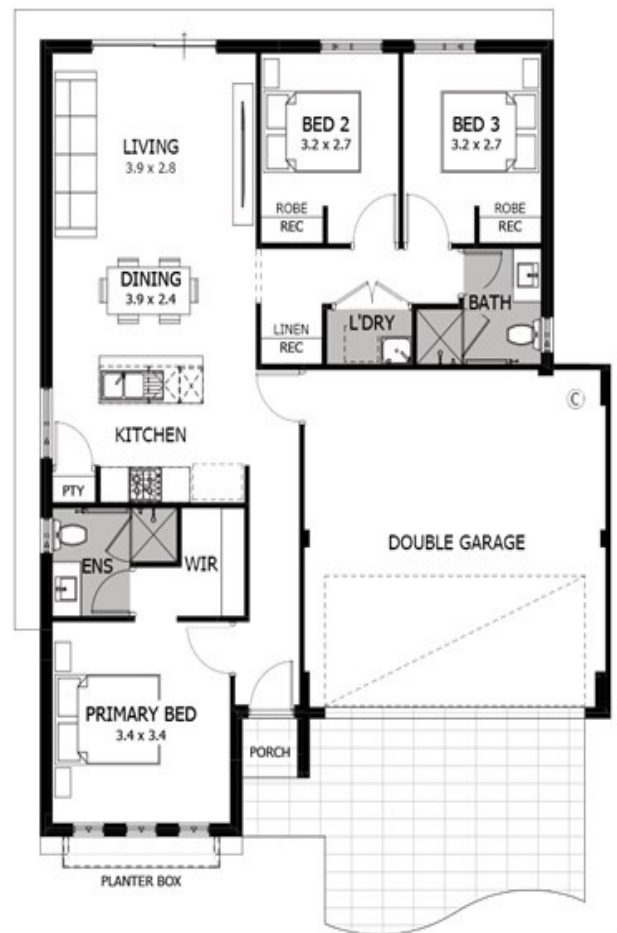
12.5 x 25m | 313sqm



## The Marley | 3 x 2 x 2

from **\$655,750\***

- 30c High ceilings throughout\*
- Hobless showers with semi-frameless shower screens
- Omega stainless steel appliances
- Stone benchtops to kitchen & bathrooms with built in cabinet
- Primary bedroom with ensuite and walk-in robe



Georgia Smith  
0410 280 003

\* Photos for illustrative purposes only and may not comply with design guidelines. Prices subject to change without notice.

[www.capricornyanchep.com.au](http://www.capricornyanchep.com.au) | 08 6285 8150

